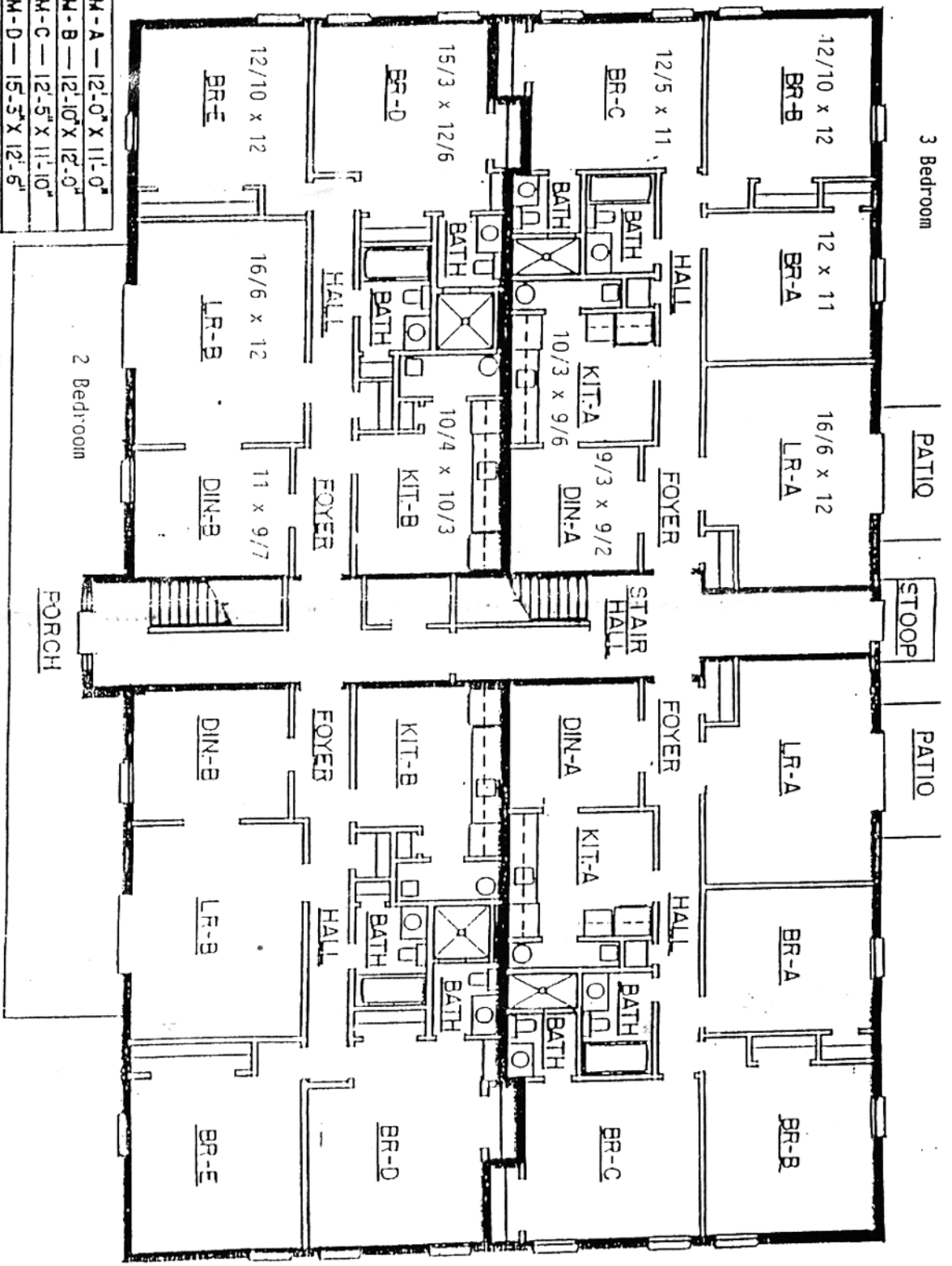


BEDROOM - A — 12'-0" X 11'-0"
BEDROOM - B — 12'-10" X 12'-0"
BEDROOM - C — 12'-5" X 11'-10"
BEDROOM - D — 15'-3" X 12'-5"
BEDROOM - E — 12'-10" X 12'-0"
LIVING ROOM - A — 16'-6" X 12'-0"
DINING ROOM - A — 9'-3" X 9'-2"
DINING ROOM - B — 11'-0" X 9'-7"
KITCHEN - A — 10'-5" X 9'-6"
KITCHEN - B — 10'-4" X 10'-3"



FLOOR PLAN

STRATFORD PARK
APARTMENTS